

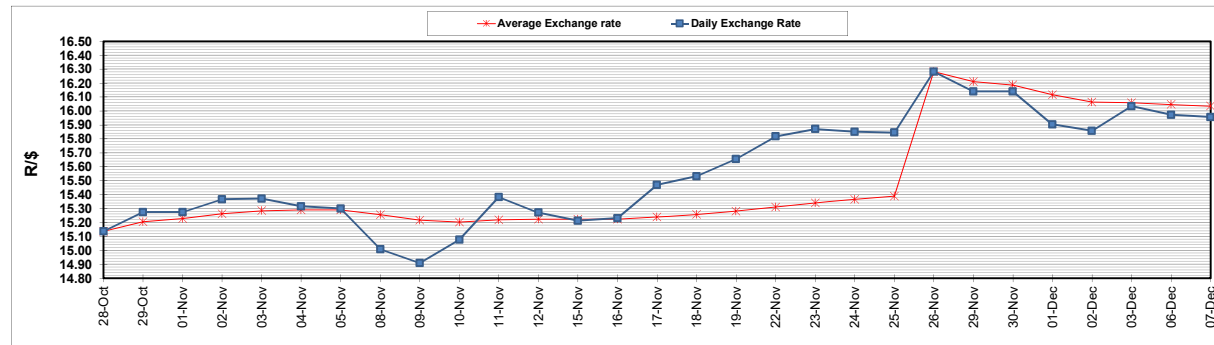
	PETROL 95 ULP	PETROL 93 ULP & LRP	DIESEL 0.05%	DIESEL 0.005%	ILL. PAR.
GAUTENG PUMP PRICE (SA c/l) AS FROM 01/12/2021	2,029.000	2,007.000	-	-	-
WHOLESALE PRICE (SA c/l) AS FROM 01/12/2021	-	-	1,792.480	1,797.880	1,167.688
SINGLE NATIONAL MAXIMUM RETAIL PRICE	-	-	-	-	1,489.000
BASIC FUEL PRICE - 07/12/2021 (SA c/l)	900.680	883.839	889.190	892.825	880.282
PRESS RELEASE CONTRIBUTION TO BFP 01/12/2021 - 07/12/2021 (SA c/l)	973.670	961.670	955.630	961.030	946.128
UNIT OVER/(UNDER) RECOVERY - 07/12/2021 (SA c/l)	72.990	77.831	66.440	68.205	65.846
AVERAGE BASIC FUEL PRICE 26/11/2021 - 07/12/2021	867.198	850.894	857.815	862.893	850.798
AVERAGE UNIT OVER/(UNDER) RECOVERY 26/11/2021 - 07/12/2021	92.762	97.065	83.565	83.137	82.580

ANALYSIS MOVEMENT OF AVERAGE OVER/(UNDER) RECOVERY

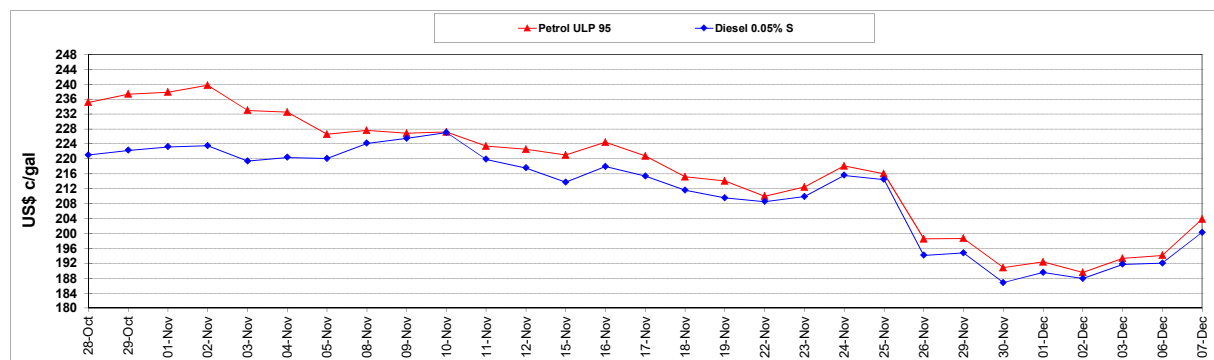
	PETROL 95	PETROL 93	DIESEL 0.05%	DIESEL 0.005%	ILL. PAR.
- MOVEMENT IN INTERNATIONAL PRODUCT PRICES	127.724	131.371	118.149	117.926	116.881
- MOVEMENT IN EXCHANGE RATE	(34.962)	(34.305)	(34.584)	(34.789)	(34.301)
AVERAGE UNIT OVER/(UNDER) RECOVERY 26/11/2021 - 07/12/2021	92.762	97.065	83.565	83.138	82.580

R/\$ EXCHANGE RATE - (R/\$15.9565 - 07/12/2021)

EXCHANGE RATE USED IN BASIC FUEL PRICE



INTERNATIONAL PRODUCT PRICES OF BASKET USED IN BASIC FUEL PRICE



BASIC FUEL PRICE IN SA CENTS PER LITRE

